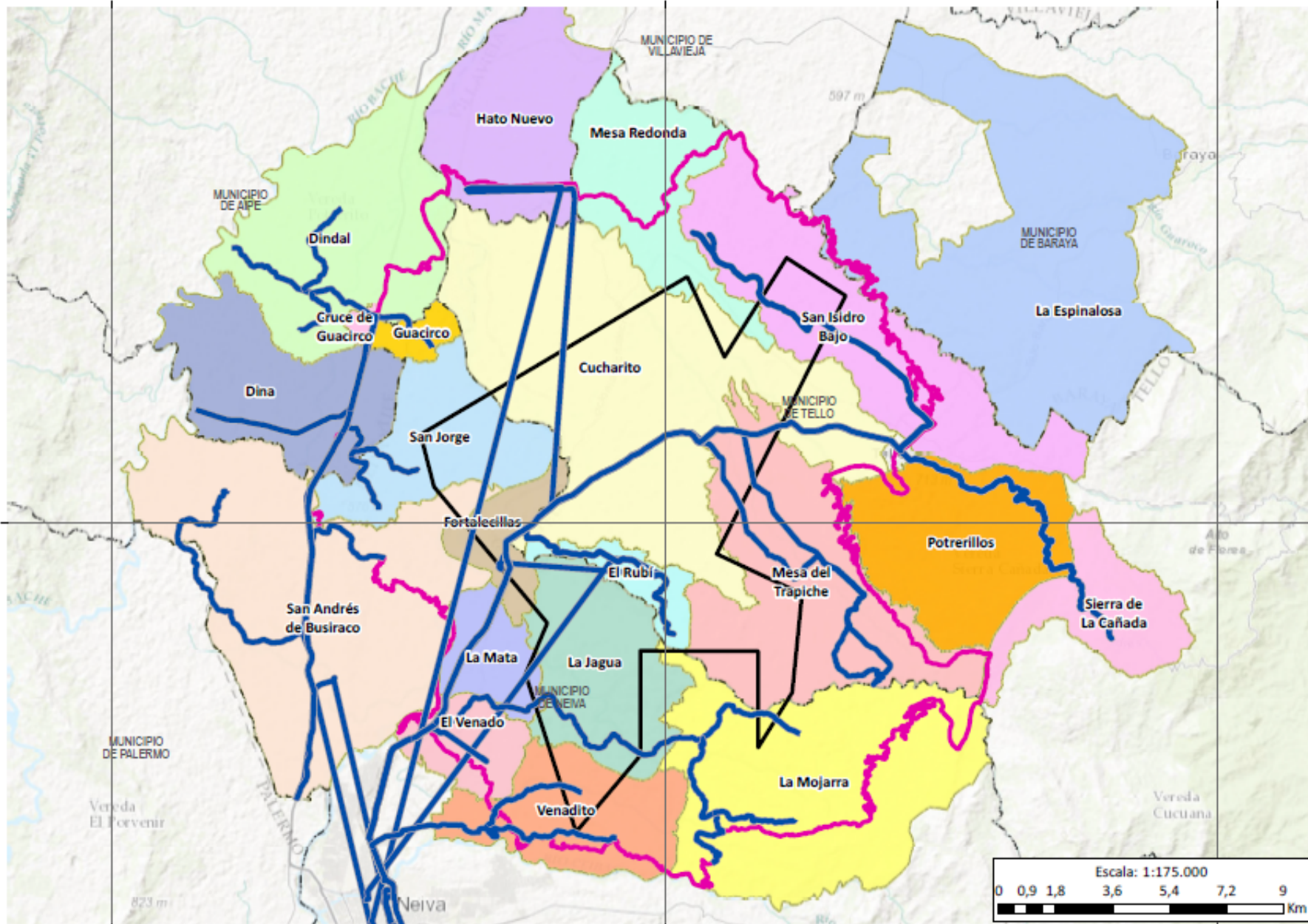


4.737.500

4.755.000

4.772.500



CONVENCIONES GENERALES

□ Límite Municipal

CONVENCIONES TEMÁTICAS

~ Recorrido perifoneo

█ Área de Influencia Fisiobiótica

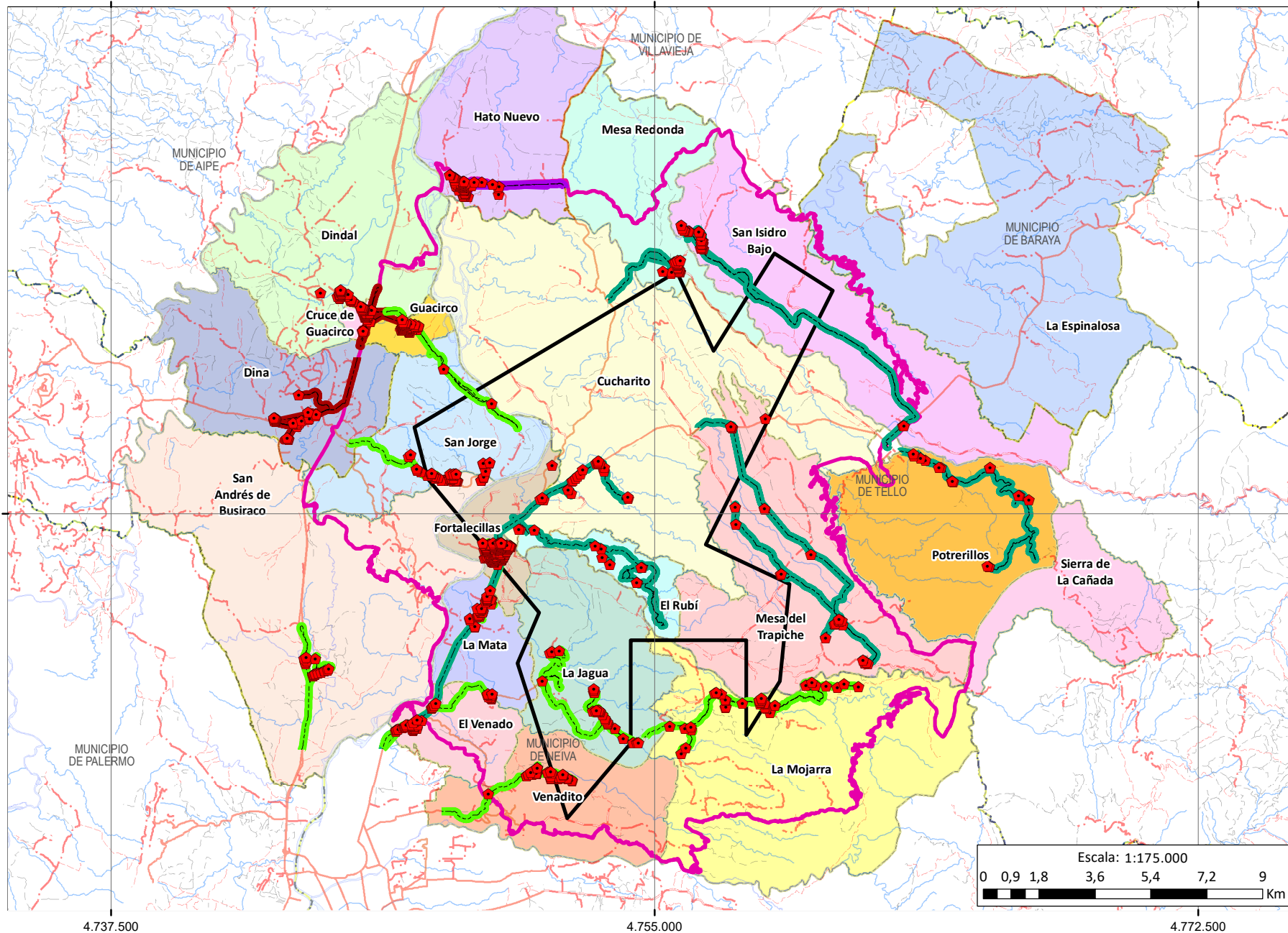
█ Área de Desarrollo VSM 37



4.737.500

4.755.000

4.772.500







4.737.500


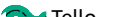

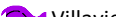
4.755.000

4.772.500

CONVENCIONES GENERALES

-  Drenaje Sencillo
-  Via Tipo 3
-  Límite Municipal
-  Drenaje Doble
-  Via Tipo 4
-  Camino, Sendero
-  Via Tipo 5
-  Via Tipo 1
-  Via Tipo 6

CONVENCIONES TEMÁTICAS

-  Vivienda
-  Neiva
-  Área de Influencia Fisicobiótica
-  Recorrido itinerante
-  Tello
-  Área de Desarrollo VSM 37
-  Aipe
-  Villavieja

